

# StrateSea Technology

ACCELERATING DISCOVERY



A Proud 2026



DIANA  
INNOVATOR

**Powering Insights**  
from **Seafloor** to **Surface**

[StrateSea.com](https://StrateSea.com) | [info@stratesea.com](mailto:info@stratesea.com)

# The Problem

Modern marine operations generate **enormous volumes** of sonar, imagery, and other sensor data — but the bottleneck is still human review:



Hours of manual sonar and imagery review



Missed or delayed detection of objects and anomalies



Highly specialized workflows that don't fit generic AI tools

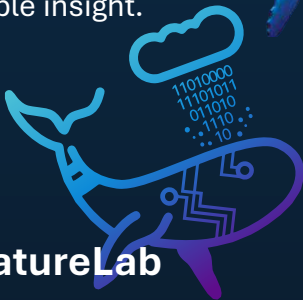


Data locked inside vendor-specific formats and systems

**The result? Valuable data. Slow insight.**

# The Solution

**StrateSea Technology** develops AI tools that help marine organizations move from raw subsea data to actionable insight.



## FeatureLab

- works alongside existing sensors and software
- prioritizes areas of interest
- organizes detections
- supports human validation

This reduces analysis time while improving consistency across projects and teams, **helping teams spend less time searching through data and more time acting on what matters.**

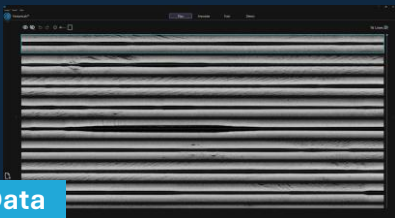


[FeatureLab produced a] “90% reduction in analysis time and higher accuracy than human review. **FeatureLab is a complete game-changer for us.**”

Report on FeatureLab  
**NATO Navy Evaluation**

**1**

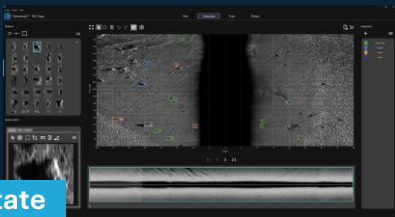
## Load Data



Quickly import sonar imagery, point clouds, or other supported data formats, no conversions or preprocessing required.

**2**

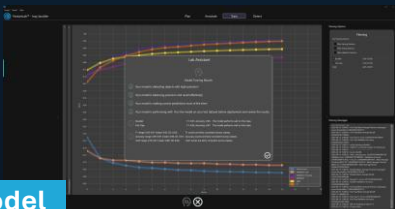
## Annotate



Built for high-volume workflows, our tools support object-level metadata, multi-class annotation, and automated validation

**3**

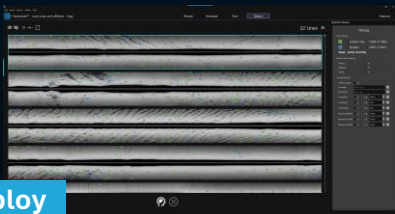
## Train Model



Generate high-performing models with just a few clicks. No coding required.

**4**

## Deploy



Seamlessly deploy your trained models to local servers, with edge device and cloud support coming soon.

# Where We Work

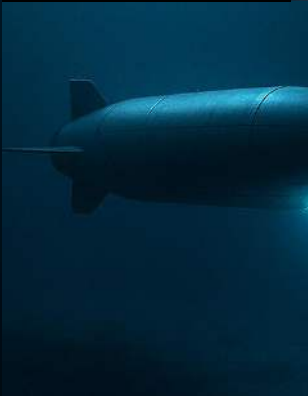


## Hydrographic Survey

- Faster review of side-scan, SAS, and multibeam-derived imagery
- Consistent object and anomaly detection across large areas

## Offshore Energy & Infrastructure

- Seafloor and asset inspection
- Change detection and debris/object identification



## Autonomous & Robotic Platforms

- Moving from post-mission analysis toward more in-mission insight
- Making sensor data usable across systems

# How StrateSea is DIFFERENT



Founded by experts in the field with over 45 combined years of hydrography and Extensive dual-use and consumer software experience

We are...



## **Operator-First**

Built for the people reviewing data, not just data scientists.



## **Sensor-Agnostic**

Works across sonar and imagery sources, helping avoid vendor lock-in.



## **Explainable AI**

Users can review, confirm, and refine detections, building trust in results.



## **Desktop-Ready**

Runs in environments where connectivity is limited or data is sensitive.



## **Designed for Integration**

Fits into existing tools, processes, and mission systems.

[StrateSea.com](https://stratesea.com) | [info@stratesea.com](mailto:info@stratesea.com)