

STREAM+



2025-01 v1

Global Data Connectivity: Cutting-Edge Satellite Solution.

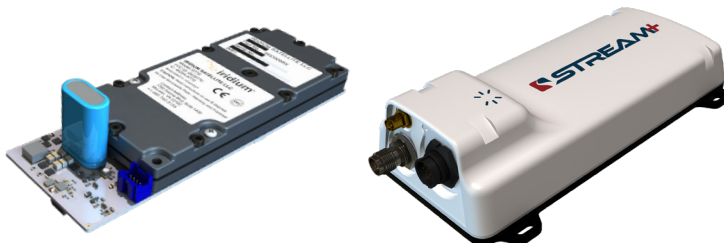
Introducing the revolutionary STREAM+ - a cutting-edge Iridium transceiver package that offers affordable, two-way connectivity anywhere on the planet. With STREAM+, you can effortlessly access data through a variety of file management services – including Amazon Web Service (AWS), providing flexibility related to data transmission.

Designed with size, weight, and power constraints in mind, STREAM+ is the ultimate solution for field applications. It offers a wide range of industry-standard protocols, features, and inputs, providing flexible integration and installation options that drastically reduce development costs and time-to-market.

Powered by the Iridium Certus® 100 midband service and Iridium Messaging Transport™ (IMT™), the STREAM+ allows for secure file transmission and reception without worrying about intermittent connectivity disruptions. With the ability to transfer data up to a few megabytes, STREAM+ guarantees connectivity, no matter where you are.



- Simplified IoT solution
- Optimized for size, weight & power
- IP-based connection via satellite
- Send larger data amounts, quickly
- API serial port, power control & status lines
- Low development cost
- AWS subscriptions are required only for IMT service utilizing active AWS services



Empowering Data Connectivity, Everywhere.

STREAM+ TECHNICAL SPECIFICATIONS

2025-01 v1

PHYSICAL		
Dimensions (L x W x H)	205 x 105 x 48 mm	8.08 x 4.13 x 1.88 in
Weight	620 g	21.9 oz
Mounting	10 Pin Panel Mount, Receptacle, Male Pins. Bayonet Lock Connector	
Antenna	GPS Antenna – Female SMA Connector	
	Iridium Antenna – Female TNC Connector	
Enclosure	Integrated Aluminium Heat Sink	
	Pressure Equalizing Gore Vent	
PRODUCT		
uController	Controls file and message transfers	
	Drives the status lines	
	Provides a simple JSON API through the serial port	
Power Control Line	Allows an external controller to switch the device on/off	
Status Lines	Message/File Inbox state Message/File Outbox state	
Hardware Interfacing	RS232 interface	
	RS485 interface (half-duplex)	
Flash Memory	Extra storage for large file transfers	
GNSS	GNSS to support stand alone telemetry solutions	
	External active antenna	
	Open drain pulse per second	
	Iridium Antenna	
	External passive antenna	
Ingress Protection	IP67	
FIRMWARE	ELECTRICAL	
Bootloader	10-40 V DC Supply	
Serial Communication	Protected Open Drain Outputs	
Logging	30 W Supply Power	
GNSS	LED Status Indicator	
OTA Communication	Automotive Pulse Protected	
IMT Support	Safe Shutdown (supercapacitor)	
Low Power Mode	Standby Mode Current 20 mA, at 12 V	
PPP (passthrough)	Shutdown Mode Current 4.5 μA, at 10-40 V	
SSH (from client terminal)	Transmit & Receive Power 10 W Max Avg, 30 W Max Peak	
	Data speed 22 kbps up, 88 kbps down	

Empowering Data Connectivity, Everywhere.